

Lotus-Morgan-Aston

Contract Crib 5
Biodegradable
IMO



IMO FTPC P8

MALONE
FABRICS GROUP





Lotus Tostado



Lotus Avellana



Lotus Beige



Lotus Blanco



Lotus Canela



Lotus Crema



Lotus Gris



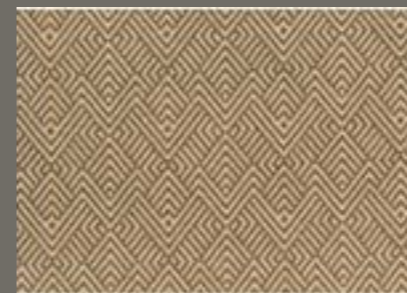
Lotus Marengo



Lotus Negro



Lotus Perla



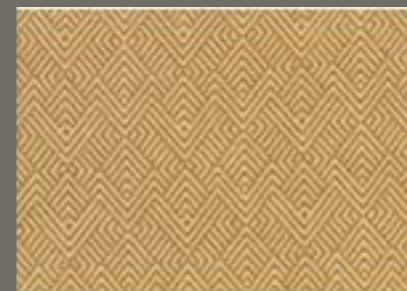
Morgan Avellana



Morgan Beige



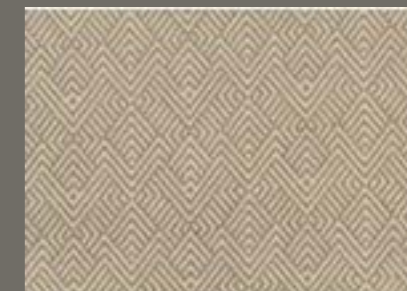
Morgan Blanco



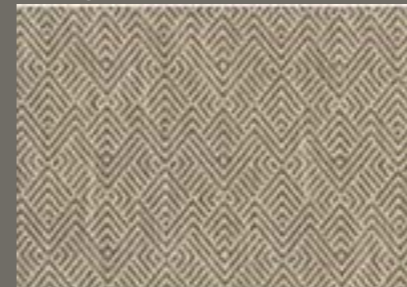
Morgan Canela



Morgan Crema



Morgan Gris



Morgan Marengo



Morgan Negro



Morgan Perla



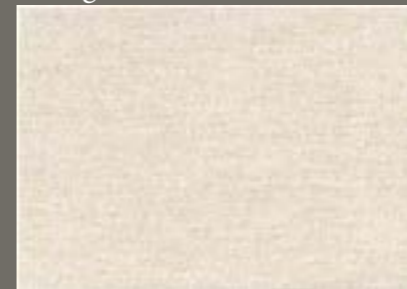
Morgan Tostado



Aston Avellana



Aston Beige



Aston Blanco



Aston Canela



Aston Crema



Aston Gris



Aston Marengo



Aston Negro



Aston Perla



Aston Tostado



Aston Negro



Morgan Negro

Aston - Morgan - Lotus Collection Naturals Collection emphasizes sustainability, offering fabrics made from 100% biodegradable natural fibres. The materials used are free from harmful chemicals and pesticides, making them environmentally friendly and hypoallergenic. The fabrics are designed with durability in mind, ensuring long-lasting quality while being gentle on the environment.

All these fabrics pass the BS 5852 Source 0, 1 (cigarette & match) and EN1021 Part 1, 2 (cigarette & match) to comply with the furniture and furnishings (fire safety) regulations (July 1988).

Crib 5 standard.

Available in IMO,

Washable 30 degrees.

Martindale Abrasion: >45,000+ rubs

Composition: 42% Polyester / 10% Flax / 22% Viscose / 25% Cotton

Weight: 620 gr/m²

Width: 140 cm

Roll Length 40m

Cleaning Instructions

Vacuum regularly to remove surface dust and fluff etc.

A dry foam cleaner may be used for stains and applied with a large pored sponge or special applicator following the manufacturer's instructions.

Do not use a coarse or stiff bristle brush and avoid saturating the fabric with cleaning fluid or water as this could cause discolouration.

Head Office

39a Old Coach Road
Hillsborough, Co Down, N. Ireland
BT26 6PB

Tel: 02895 211 888

sales@malonefabricsgroup.co.uk

www.malonefabrics.co.uk

London Office

3rd Floor, 207 Regent Street
London
W1B 3HH

Tel: 0207 692 0819

london@malonefabricsgroup.co.uk

www.malonefabrics.co.uk