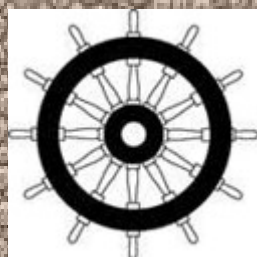




MALONE

FABRICS

MANTUS



IMO

# MANTUS



MAL530



MAL630



MAL311



MAL830



MAL430



MAL930



MAL240



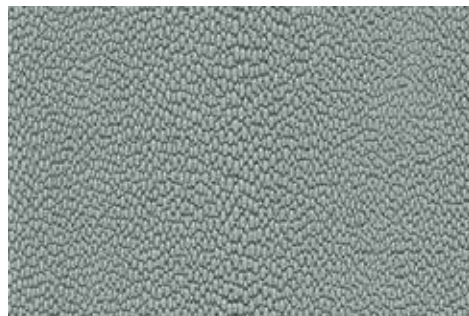
MAL140



MAL040



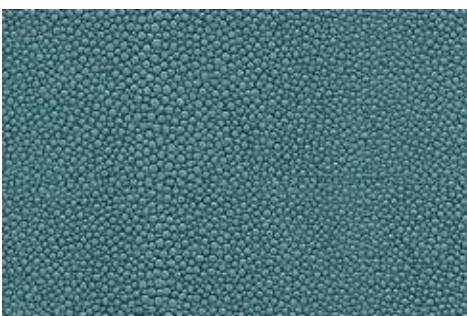
MAL411



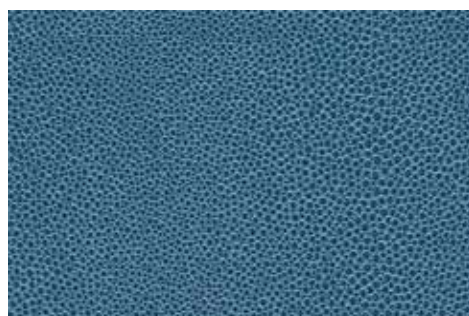
MAL511



MAL340



MAL540



MAL440



MAL640



# MANTUS



Mantus fascinates with its true to original manta ray look. Its special allure results from its interesting colour contrast and a fine play of matt and shiny areas due to grain valleys and lacquered peaks.

---

IMO FTCP Part 8  
50,000 MARTINDALE  
TEAR RESISTANT  
EASY TO CLEAN

CRIB 5 BS5852  
LONG LASTING  
15 COLOURS  
LIGHTFAST

---

## Material composition

approx 73% PVC – compound 2% PU - finish

approx 25% CO/PES – knitted fabric

weight 780 +/- 50 g/m<sup>2</sup>

**Thickness** 1.7+/- 0.2mm

**Roll width** 150 cm

**Roll length** 30m

---

## Application / Processing

Suitable for many kinds of upholsteries and coverings in the upholstery industry. Especially suitable for the use in the modern residential and contract area, in public buildings and institutions. Problem-free processing in the usual procedures (sewing, tacking, sticking, nailing). Do not use solvent-based adhesives!

### Fabric care

For durable joy with your material, please clean regularly. Pollution by oil, fat and ink must be removed immediately. Clean with warm, mild soap sud and a micro-fibre cloth or a soft hand brush. Please, do not use solvents, chloride, abrasives, chemical cleaning agents or wax polishes. Please note that colourings by jeans or other textiles are excluded from any manufacturer's guarantee.

### Special Notes

Our written and spoken technical recommendations, which we provide based on our experience in accordance with the current state of knowledge, are nonbinding and do not constitute a legal relationship and are not additional obligations from the purchase agreement. They do not release the purchaser from checking our products for the intended use under his own responsibility. Otherwise, our general terms and conditions are in effect. All earlier provisions to the contrary hereby become invalid.



# MALONE

## FABRICS

---

Malone Fabrics  
Unit 3, 40 The Cutts  
Derriaghy  
Belfast  
BT17 9HS

[E: sales@malonefabrics.co.uk](mailto:sales@malonefabrics.co.uk)

W: malonefabrics.co.uk

T: 020895211888