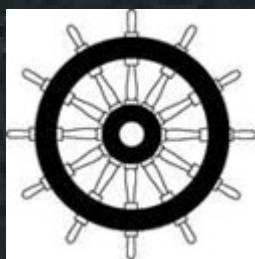




MALONE

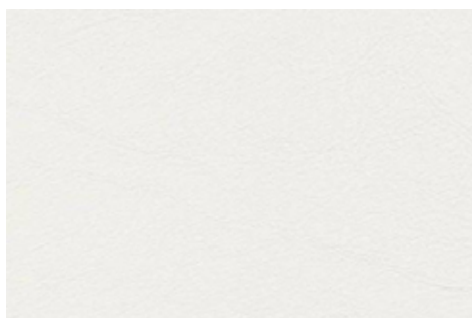
FABRICS

HORIZON



IMO

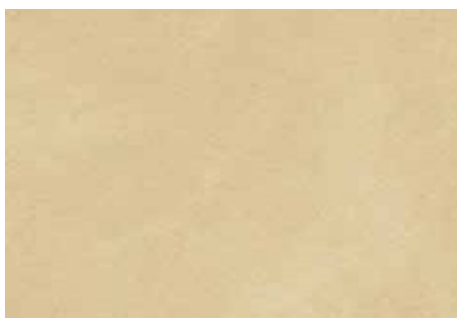
HORIZON



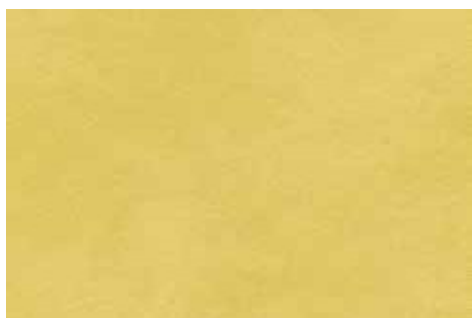
MAL709



MAL207



MAL307



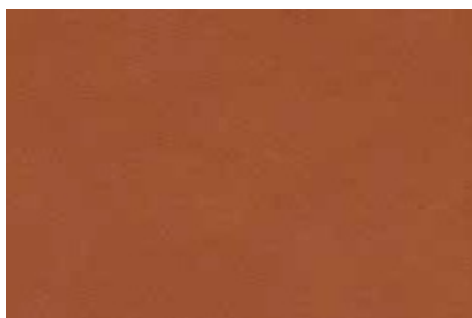
MAL389



MAL907



MAL017



MAL929



MAL117



MAL060



MAL499



MAL729



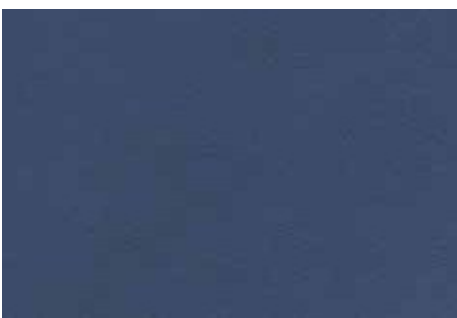
MAL271



MAL950



MAL350



MAL417

HORIZON



MAL529



MAL160



MAL317



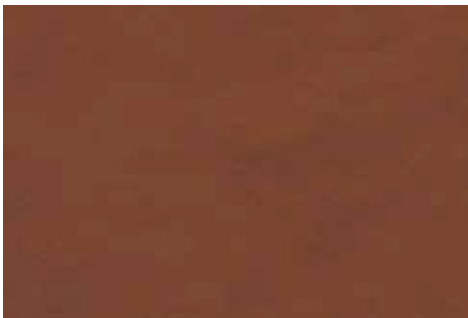
MAL260



MAL107



MAL507



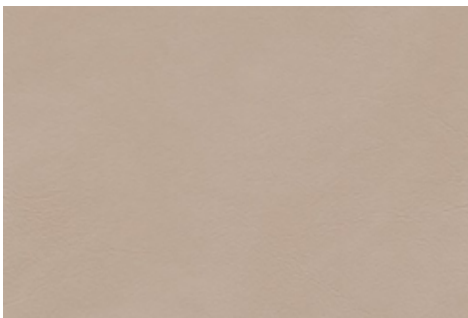
MAL607



MAL707



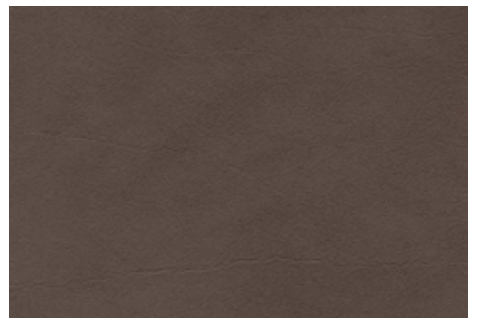
MAL807



MAL961



MAL071



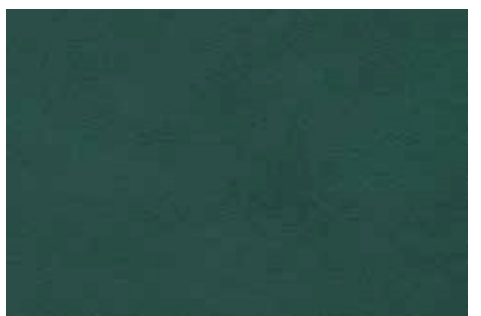
MAL171



MAL517



MAL629



MAL617

HORIZON



A high quality upholstery material, with a fine-structured calf leather look. The material is all-purpose and especially suitable for the cruise industry, healthcare, hospitality and public buildings

IMO FTCP Part 8
100,000 MARTINDALE
TEAR RESISTANT
BLOOD AND URINE RESISTANT
DISINFECTANT RESISTANT

CRIB 5 BS5852
LONG LASTING
30 COLOURS
LIGHTFAST
EASY TO CLEAN

Material composition

approx 89% PVC – compound
approx 11% CO/PES – knitted fabric
weight 825 +/- 50 g/m²

Thickness 1.3 +/- 0.2mm

Roll width 137 cm

Roll length 30m

Application / Processing

Suitable for many kinds of upholsteries and coverings in the upholstery industry. Especially suitable for the use in the modern residential and contract area, in public buildings and institutions. Problem-free processing in the usual procedures (sewing, tacking, sticking, nailing). Do not use solvent-based adhesives!

Fabric care

For durable joy with your material, please clean regularly. Pollution by oil, fat and ink must be removed immediately. Clean with warm, mild soap sud and a micro-fibre cloth or a soft hand brush. Please, do not use solvents, chloride, abrasives, chemical cleaning agents or wax polishes. Please note that colourings by jeans or other textiles are excluded from any manufacturer's guarantee.

Special Notes

Our written and spoken technical recommendations, which we provide based on our experience in accordance with the current state of knowledge, are nonbinding and do not constitute a legal relationship and are not additional obligations from the purchase agreement. They do not release the purchaser from checking our products for the intended use under his own responsibility. Otherwise, our general terms and conditions are in effect. All earlier provisions to the contrary hereby become invalid.



MALONE

FABRICS

Malone Fabrics
Unit 3, 40 The Cutts
Derriaghy
Belfast
BT17 9HS

[E: sales@malonefabrics.co.uk](mailto:sales@malonefabrics.co.uk)

W: malonefabrics.co.uk

T: 020895211888