

# Elegance Collection

Contract Crib 5  
125,000 + rubs



IMO FTPC P8



MALONE

FABRICS



Etain Blue



Aqua



Light Teal



Cote Dazur



Reef



Petrol



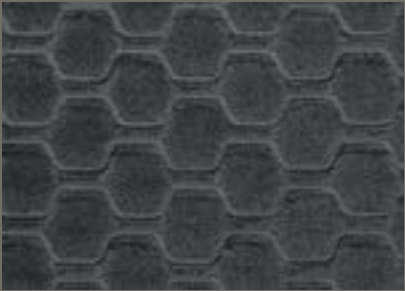
Black



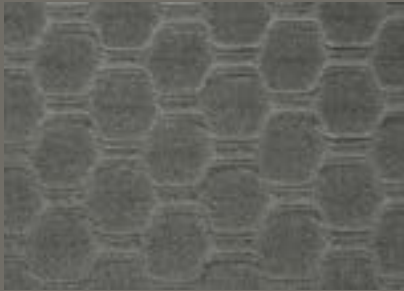
Noir



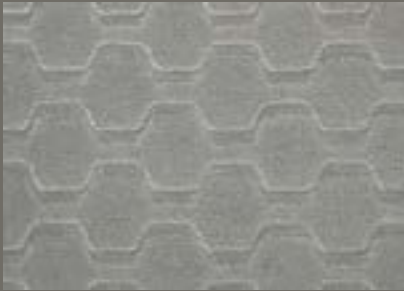
Charcoal



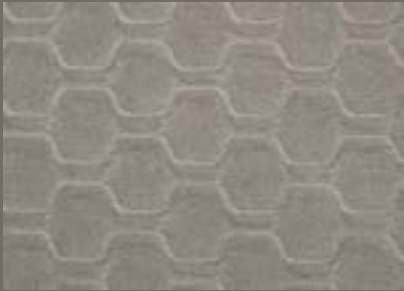
Steel



Storm



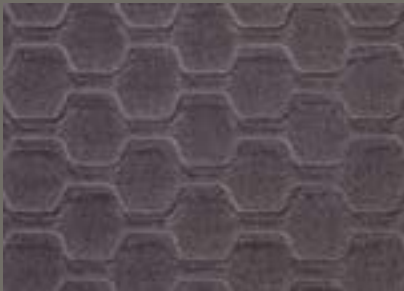
Smoke



Gainsboro



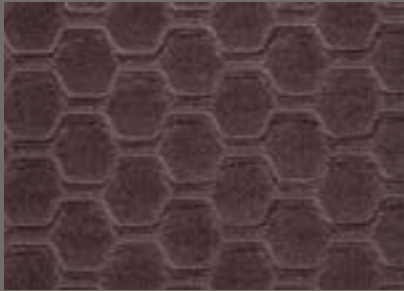
Dusty Pink



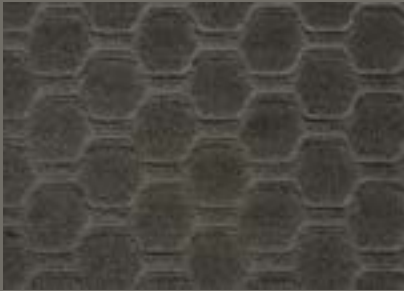
Lavender



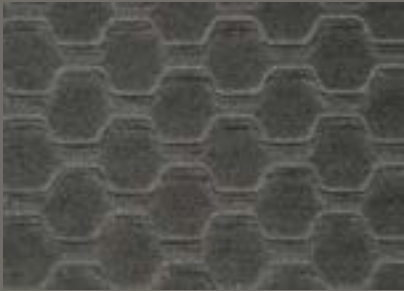
Plum



Violet



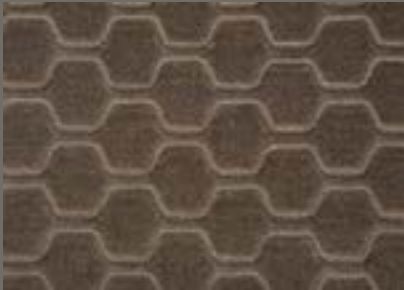
Mink



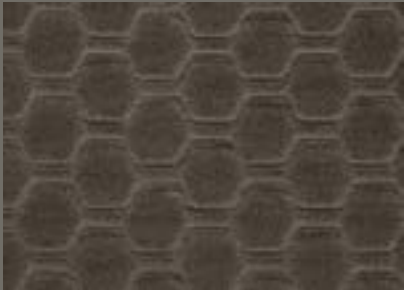
Gray



Dim Gray



Moleskin



Taupe



Timber



Rice



Chalk



White

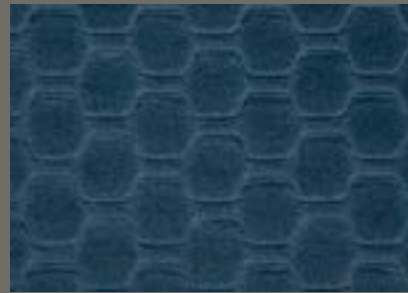


Milk



Etain Blue

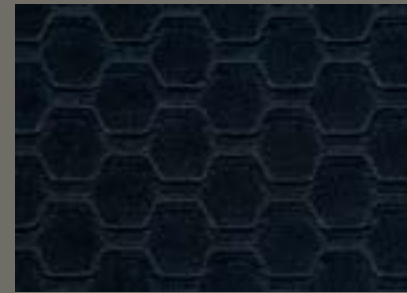




Steel Blue



Navy



Ink



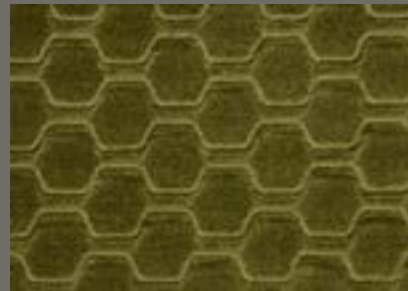
Amazon



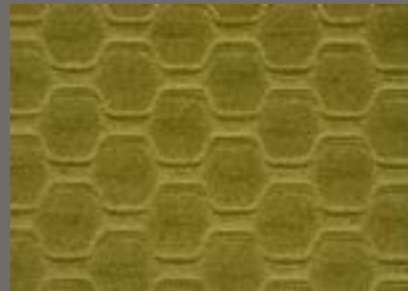
Seaweed



Olive



Anise



Chartreuse



Brick



Crimson



Kiss



Red



Burgundy



Cherry

**Elegance collection** is a luxurious short pile, non-movement embossed velvet that co-ordinates with our **Serenity** collection. This new easy care woven 100% polyester fabric is exceptionally hard wearing and suitable for extreme contract, domestic upholstery and curtain and bedding applications.

All these fabrics pass the BS5852 Part 1 ignition source 0 (cigarette) and ignition source 1 (match) test to comply with the furniture and furnishings (fire safety) regulations (July 1988).

Crib 5

IMO certified

Dirt and water repellent finish

Anti-microbial treatment available

Can also be treated to BS5867 for commercial curtains

Martindale Abrasion 125,000+ rubs

Composition 100% Polyester

Weight 385gm/m<sup>2</sup>

Width 140cm

Roll length 40m

### Cleaning Instructions

To minimise the effects of creasing, we recommend you turn cushions regularly and use a good quality foam interior.

Vacuum regularly to remove surface dust and fluff etc.

A foam cleaner may be used for stains and applied with a large pored sponge or special applicator following the manufacturers instructions.

Do not use a coarse or stiff bristle brush and avoid saturating the fabric with cleaning fluid or water as this could cause discoloration



### Head Office

Unit 3, 40 The Cutts  
Derriaghy, Belfast, N. Ireland  
BT17 9HS

Tel: 02895 211 888

[sales@malonefabrics.co.uk](mailto:sales@malonefabrics.co.uk)

[www.malonefabrics.co.uk](http://www.malonefabrics.co.uk)

### London Office

3rd Floor, 207 Regent Street  
London

W1B 3HH

Tel: 0207 692 0819

[london@malonefabrics.co.uk](mailto:london@malonefabrics.co.uk)

[www.malonefabrics.co.uk](http://www.malonefabrics.co.uk)